

# NEW RCU WITH RFID FEATURE

## Product Replacement 86010148 -> 86010148V01

We are pleased to inform you that our RCU 86010148 will be replaced by the upgraded type 86010148V01. With this upgrade, we are introducing the **groundbreaking innovation of RFID-based communication** between the antenna and the RCU, thereby significantly easing the installation process.

### New Features:

- ▶ Integrated RFID reader
- ▶ Improved inrush current
- ▶ Colour coding abbreviation according to AISG-Layer 2 Array identification displayed

Our antennas will successively be equipped with RFID tags. On this tag, all relevant antenna data will be stored, namely the antenna configuration file, the antenna serial number and the antenna model number. After mounting the RCU to the antenna, all data stored on the antenna tag are read by the RCU once the power is switched on.

### Advantages:

- ▶ **Reduction of CAPEX**
- ▶ Fully automatic antenna configuration
- ▶ Only specific site information needs to be added
- ▶ No calibration needed
- ▶ Minimizing possible installation errors
- ▶ Saving time during installation process
- ▶ Reduction of switch-on power peaks

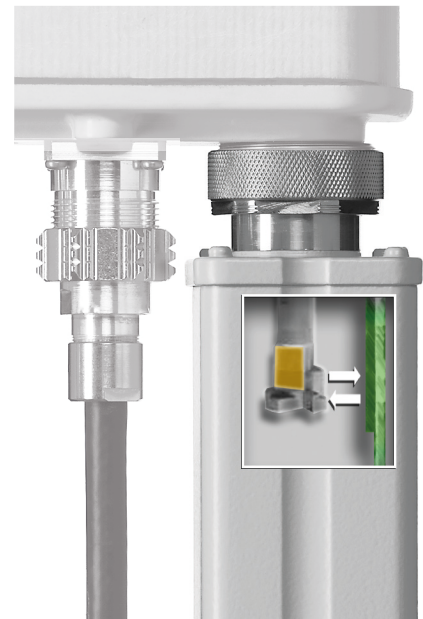
### Timeline:

- ▶ Serial production of new RCU from **September 2013** onwards
- ▶ Upgrade of first antennas with RFID tag starting in **4th quarter 2013**
- ▶ All antennas with RFID tag upgrade will clearly be marked

Please note: Any mixed situation of old / new types is permissible:

|             |   |                          |   |   |
|-------------|---|--------------------------|---|---|
| 86010148    | + | Antenna with RFID tag    | = | RET control fulfilled, no automatic configuration |
| 86010148V01 | + | Antenna without RFID tag | = | RET control fulfilled, no automatic configuration |

Please order any additional demand for the old RCU 86010148 before the **31th of March 2014**. No further planning with this RCU type should be made thereafter. Further information about the new feature will be provided with our respective RCU-data sheet.



Customer Information